

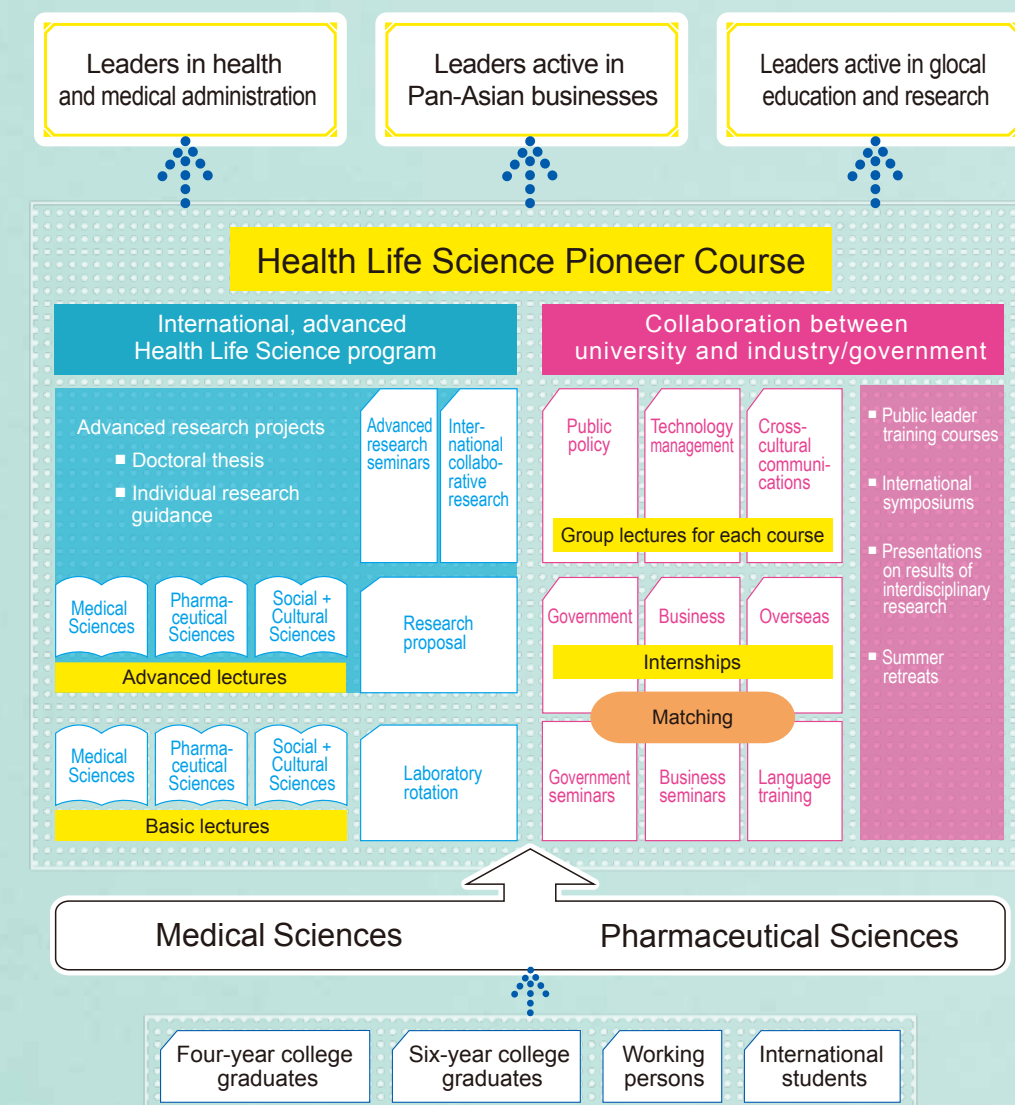
Training the next generation of leaders in the field of Health Life Science

The HIGO Program aims to educate “glocal” (global + local) leaders in understanding the societal needs of the Kyushu region of Japan and all throughout Asia and to create local and global ties to resolve the issues these regions face.

About the Program

Using advanced ideas and technologies for the benefit of glocal society

Generating new scholarship and work opportunities in Health Life Science



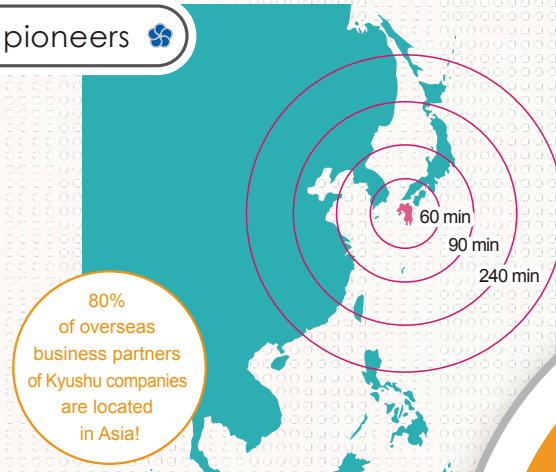
Creating Health Life Science pioneers

Glocal development of Kyushu and Asia

- Lack of Health Life Science personnel in Asia
- High marketability in healthcare domain
- Young people in Japan important in progress of and interaction with emerging nations

Skills required

- Ability to understand the needs of both local societies and societies throughout Asia
- Understanding of the histories, cultures, and languages of Asian countries



Health Life Science specialists

Graduate School Guidance: Medical and Pharmaceutical Sciences

- Clinical research on diabetes, metabolism, lifestyle diseases, cancer immunity, oxidative stress, molecular genetics, social medicine, regional medicine, foundations for drug development, molecular design, drug delivery, and pharmaceuticals

10-year COE foundation

- Completely in English
- Globally competitive education
- World-class cell lineage control research
- Developmental Biology and Regenerative Medicine research
- Collaboration with overseas research organizations (other countries in Asia, etc.)



KEY Forum



Advanced Research Seminar

Overseas internships utilizing Kumamoto University's focus on Asia

Kumamoto University Forum

- Held in Shanghai, Daejeon, Surabaya, Hanoi, and Kumamoto

Overseas offices

- China (Shanghai, Dalian, Shandong University)
- Korea (KAIST)
- Indonesia (ITS)

Kumamoto-Shanghai office (collaboration between Kumamoto Prefecture and Kumamoto City)

Overseas Internships

Kumamoto-Shanghai office
Participating universities in China, Taiwan, Korea, N. America, etc., research organizations, the UN, WHO

Glocal Social Science Practical Political Science Government Seminars

Governor of Kumamoto Pref., Mayor of Kumamoto City
Editorial staff from Kumamoto Nichinichi Shimbun Newspaper

Government Internships

Government and medical organizations

Glocal Health Life Science Pioneers

The Latest in Health Life Science

Graduate Schools of Medical and Pharmaceutical Sciences Program members
Faculty fellows

Cutting-Edge Research Seminars

Featuring the top experts from around the world

Social and Cultural Sciences

Graduate School of Social and Cultural Sciences
Center for Policy Studies
Program members
Faculty fellows

Business Internships

Businesses in Kumamoto / Kyushu, venture enterprises, domestic companies

Business Seminars

Businesses in Kumamoto / Kyushu, venture enterprises, domestic companies

Expertise in Social and Cultural Sciences

Kumamoto University Center for Policy Studies

- Public Policy Science

Kumamoto University Graduate School of Social and Cultural Sciences

- Social and Cultural Sciences
- Comparative Culture
- Medical Conflict Resolution

- Languages (English, Chinese, etc.)
- Comparative Administration
- Ethics

Nurturing communication and understanding with foreign cultures by learning about differences in social structures, values, histories, and cultures of countries in Asia.



Kumamoto-Shanghai Office

A chance to learn about global medical policy, health industry needs in Asian countries, and more!

Learn by working with local government and business organizations

Understand the needs of glocal society

Collaborating with the top members of local government and business



Ikuo Kabashima, Governor



Seishi Koyama, Mayor



Isao Taniguchi, President



Business Seminar

Message from the Program Director

Motohiro Takeya
Dean, Graduate School of Medical Sciences



The Program for Leading Graduate Schools began in 2011 as part of an initiative by the Ministry of Education, Culture, Sports, Science and Technology to train leaders to contribute to business, government and academia on a global scale. In order to accomplish this, we have gathered the top instructors and students from around the world and provide support for revolutionary graduate-level studies in order to construct and develop a high-quality, globally-recognized academic program that explores multiple fields of research at both Master's and doctorate levels. Our intention with this program is to push graduate-level studies in this field to new heights. The HIGO Program is aligned with our goals and trains the next generation of glocal leaders by involving various regional government (including the governor of Kumamoto Prefecture and mayor of Kumamoto City) and industry leaders in their education.

Message from the Program Coordinator

Shoen Kume
Professor, Institute of Molecular Embryology and Genetics



Kumamoto/Kyushu is the region of Japan where much of the communication between Japan and the rest of Asia takes place. Many Japanese companies are expanding throughout Asia, and they are looking for young leaders that can promote overseas expansion and use their expert knowledge to take on regional medical policy. Until now, Health Life Science graduate programs had trained students to have a highly-specialized knowledge and focus more on North America. The HIGO Program aims instead to train students to have expert knowledge and focus instead on Asia in order to best understand the structures of Asian and regional societies and comprehend the needs of industry.

Complete Support

- 1 Subsidies**
Applicants are chosen to receive subsidies so that they may focus solely on academics and research.
*Students in courses that do not have subsidies may be eligible for work as a TA.
- 2 Internships**
We provide travel expenses needed for commuting for internships.
- 3 Research funding**
We provide funding to support cutting-edge research projects.
- 4 Research result presentations**
We provide funding for expenses incurred when presenting research results (conference participation fees, conference travel expenses, English proofreading expenses, article submission fees, patent application fees).
- 5 International student support**
Foreign researchers and faculty provide support as mentors and recruiters. Foreign faculty at Kumamoto University can return to their home country to recruit high-level students, and these faculty members serve as international student advisors once these students enter Kumamoto University.
- 6 Career support**
We work closely with the Human Resource Center for Innovation and the Career Support Unit.